



Meteor Road
Westcliff-On-Sea, SS0 8DF
£1,495 PCM



Meteor Road

Westcliff-On-Sea, SS0 8DF

Nestled on Meteor Road in the charming area of Westcliff On Sea, this delightful first-floor flat offers a perfect blend of comfort and convenience. Boasting three well-proportioned bedrooms, including two spacious double rooms and a versatile single room, this property is ideal for families or those seeking extra space for a home office or guest room.

The large lounge provides a welcoming atmosphere, perfect for relaxation. The modern kitchen is equipped with contemporary fittings, making meal preparation a pleasure. The flat also features a stylish four-piece family bathroom, ensuring that all your needs are met in this well-appointed home.

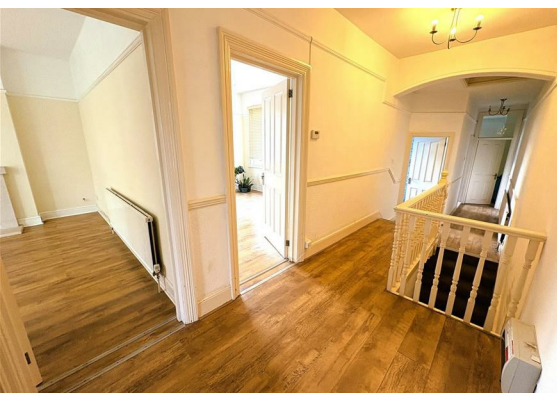
In addition to its appealing interior, the property benefits from parking for one vehicle on the shared driveway, a valuable asset in this desirable location. Residents will appreciate the proximity to the seafront, where leisurely strolls and seaside activities await. Furthermore, the nearby station offers excellent transport links, making commuting to London or other destinations a breeze.

Stairs Leading to First Floor

Landing

Lounge





- Kitchen
- Master Bedroom
- Second Bedroom
- Third Bedroom
- Family Bathroom
- Shared Driveway

Floor Plan

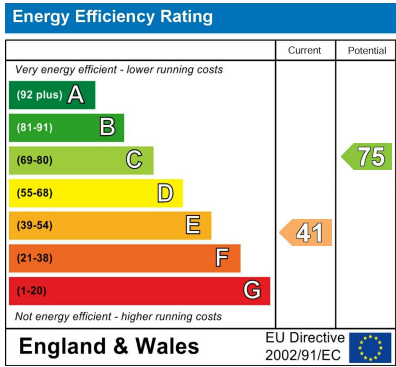


Please contact our office on 01702710555 if you wish to arrange a viewing appointment for this property or require further information.

Area Map



Energy Efficiency Graph



These particulars, whilst believed to be accurate are set out as a general outline only for guidance and do not constitute any part of an offer or contract. Intending purchasers should not rely on them as statements of representation of fact, but must satisfy themselves by inspection or otherwise as to their accuracy. No person in this firm's employment has the authority to make or give any representation or warranty in respect of the property.